

James Creek Road Subdivision

Statement of Landscape Intent

Prepared For:
MPD Investments Pty Ltd



Australia
China
South East Asia

Follow us on



placedesigngroup.com

Project	James Creek Road Subdivision
Report title	Statement of Landscape Intent
Document number	1621035
Prepared for	MPD Investments Pty Ltd
Authors	Echo Zan
Revision number	D
Revision issue date	26 April 2023
Approved	Peter Bell, Clint Wood
Reason for revision	Development Application

Disclaimer: This report has been prepared in accordance with the scope of services described in the contract or agreement between Place Design Group Pty Ltd ACN 082 370063 and the Client. The report relies upon data, surveys, measurements and results taken at or under the particular times and conditions specified herein. Any findings, conclusions or recommendations only apply to the aforementioned circumstances and no greater reliance should be assumed or drawn by the Client. Furthermore, the report has been prepared solely for use by the Client and Place Design Group accepts no responsibility for its use by other parties.

01

SITE CONTEXT

- 1.1 Location
- 1.2 Site Photos

02

LANDSCAPE DESIGN

- 2.1 Landscape Masterplan
- 2.2 Circulation & Recreational Analysis
- 2.3 Section 1 - Northern
- 2.4 Section 2 - Southern
- 2.5 Planting Batter to Austons Lane
& James Creek Road

03

DETAIL DESIGN

- 3.1 Detail Plan 1 - Entrance
- 3.2 Section 4 - Eastern Entrance
- 3.3 Detail Plan 2 - Central Parkland
- 3.4 Detail Plan 3 - Western Parks & Basin
- 3.5 Section 5 - Western
- 3.6 Section 6 - Western Boundary
- 3.7 Detail Plan 4 - Eastern Parks & Basin
- 3.8 Character Images

04

PLANTING

- 4.1 Planting Palette - Street
- 4.2 Planting Palette - Park Trees
- 4.3 Planting Palette - Park Shurb &
Groundcover
- 4.4 Planting Palette - Southern Batter to
Austons Lane
- 4.5 Planting Palette - Bio Basin

05

APPENDIX

- 5.1 Site Survey

04

06

07

08
09
10
11
12

13

14
15
16
17
18
19
20
21

22

23
24
25
26
27

28

29

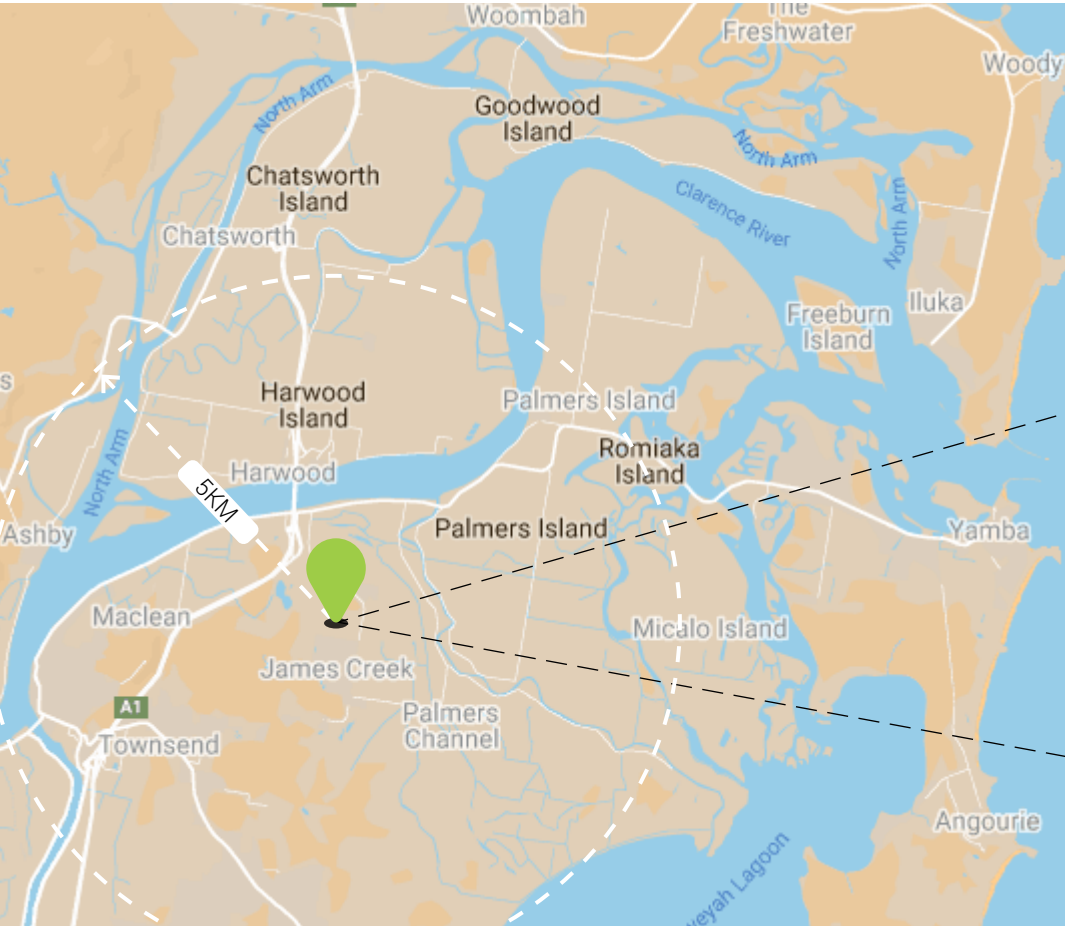


01

SITE CONTEXT

SITE CONTEXT

1.1 Location



James Creek

SITE CONTEXT

1.2 Site Photos



01 View from James Creek Road



02 View from James Creek Road



03 View from James Creek Road



04 View from Austons Lane



Key Plan



02

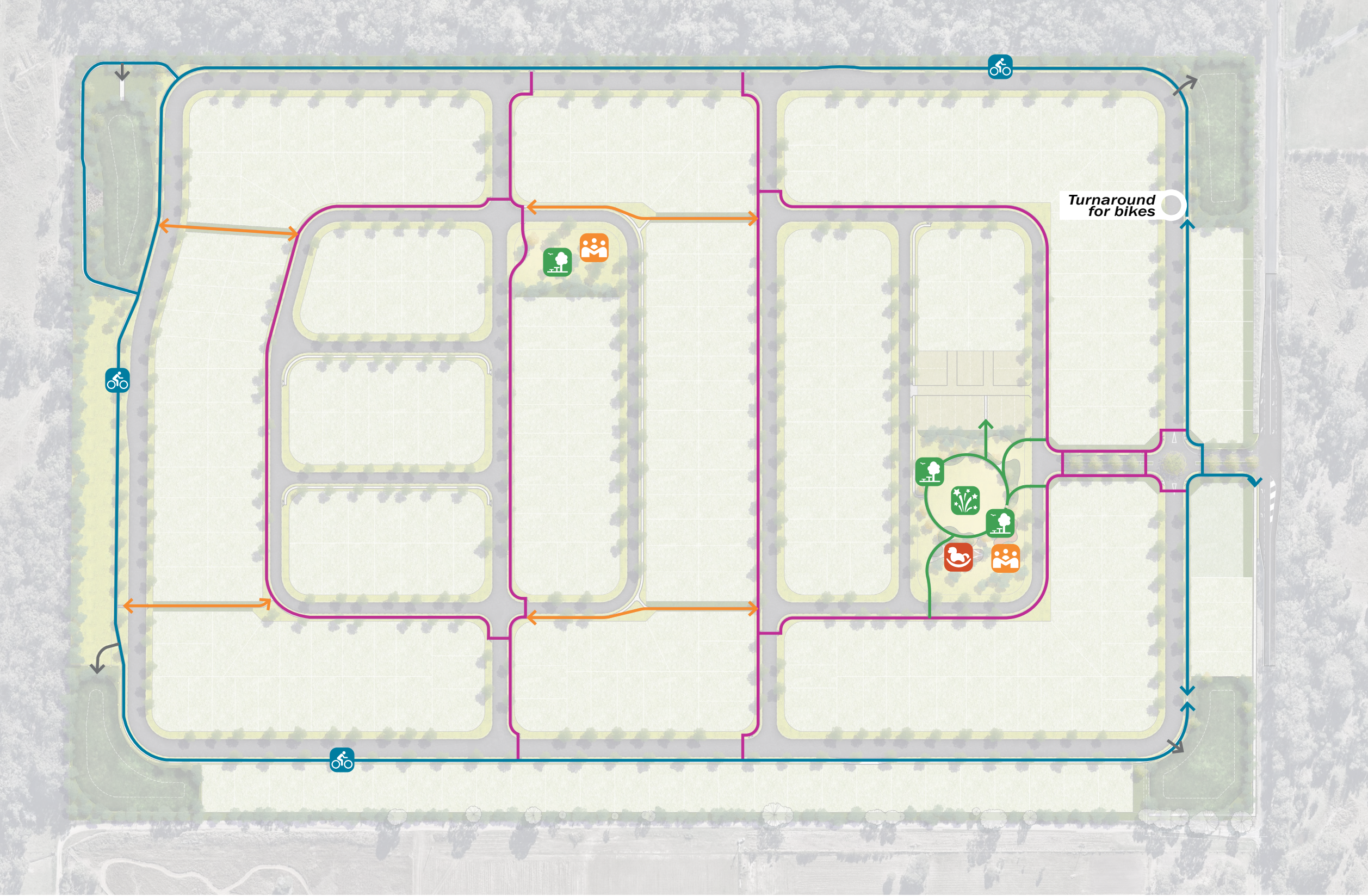
LANDSCAPE DESIGN

2.1 Landscape Masterplan

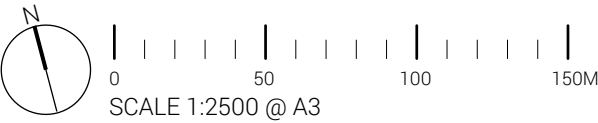


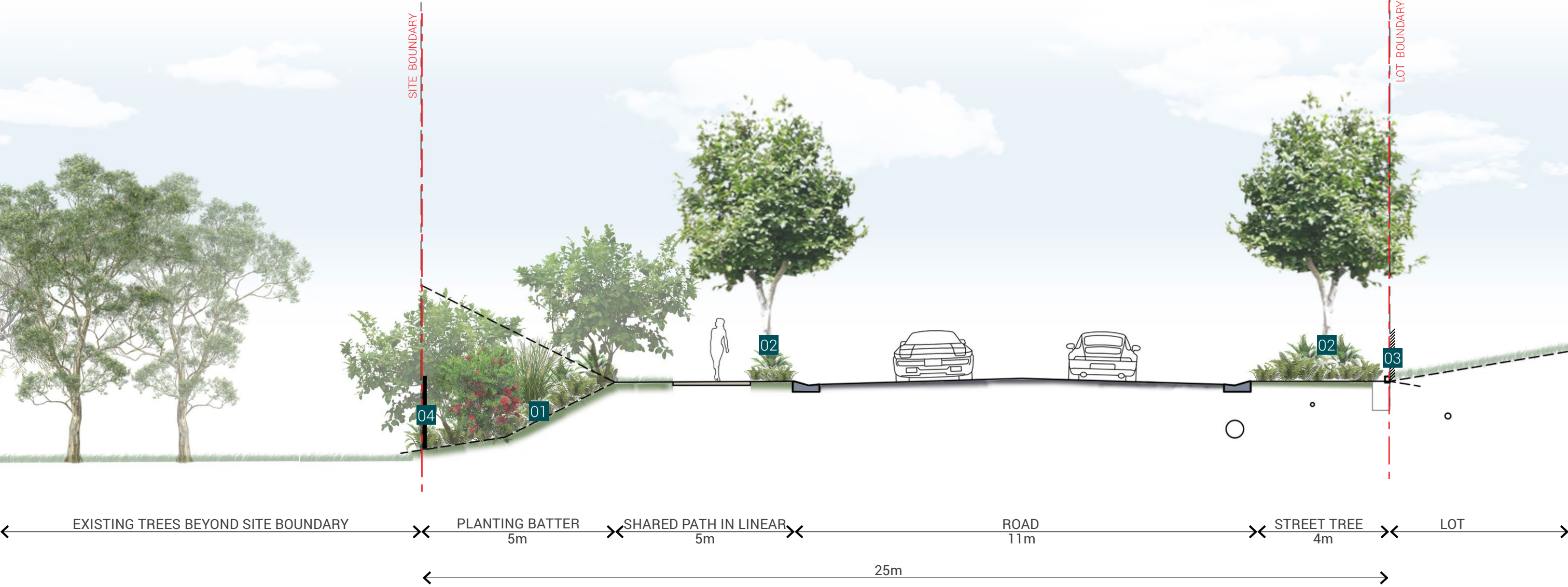
- LEGEND**
- 1. Entry boulevard
 - 2. Central parkland with Village Green and Playground
 - 3. Northeast park & basin
 - 4. Southeast park & basin
 - 5. Perimeter community loop for bike & pedestrian recreation
 - 6. Pedestrian linkage between lots. 1500mm high pool fence to adjacent lots
 - 7. Pocket park (north facing)
 - 8. Northwest park & basin
 - 9. Southwest park & basin
 - 10. Planting batter to Austons Lane
 - 11. Existing trees to be retained
 - 12. Medium density dwelling
 - 13. Neighbourhood centre
 - 14. Fencing to north, west and southern boundarys within planting zone
 - 15. Timber fence to road frontage



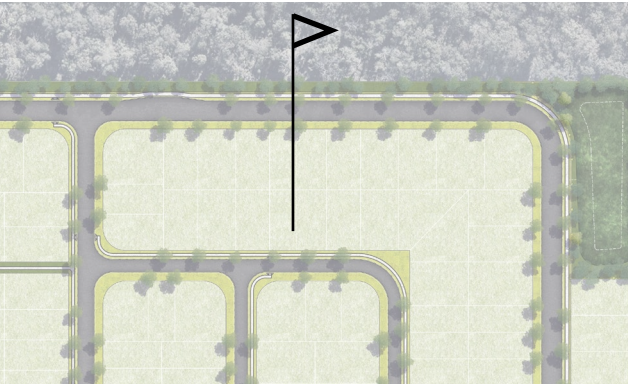


- Legend**
- Perimeter shared path for pedestrian & bike
 - Community footpath
 - Pedestrian linkage between lots
 - Parkland path
 - Gated Maintenance Access to Bio-basin
 - Community open space
 - Playground
 - Village green
Event lawn
 - Seating & rest



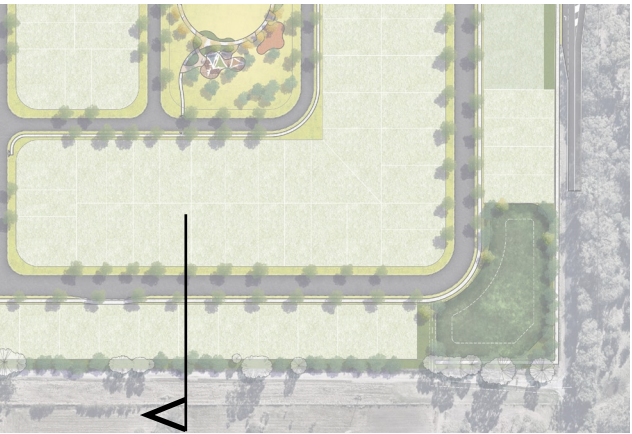
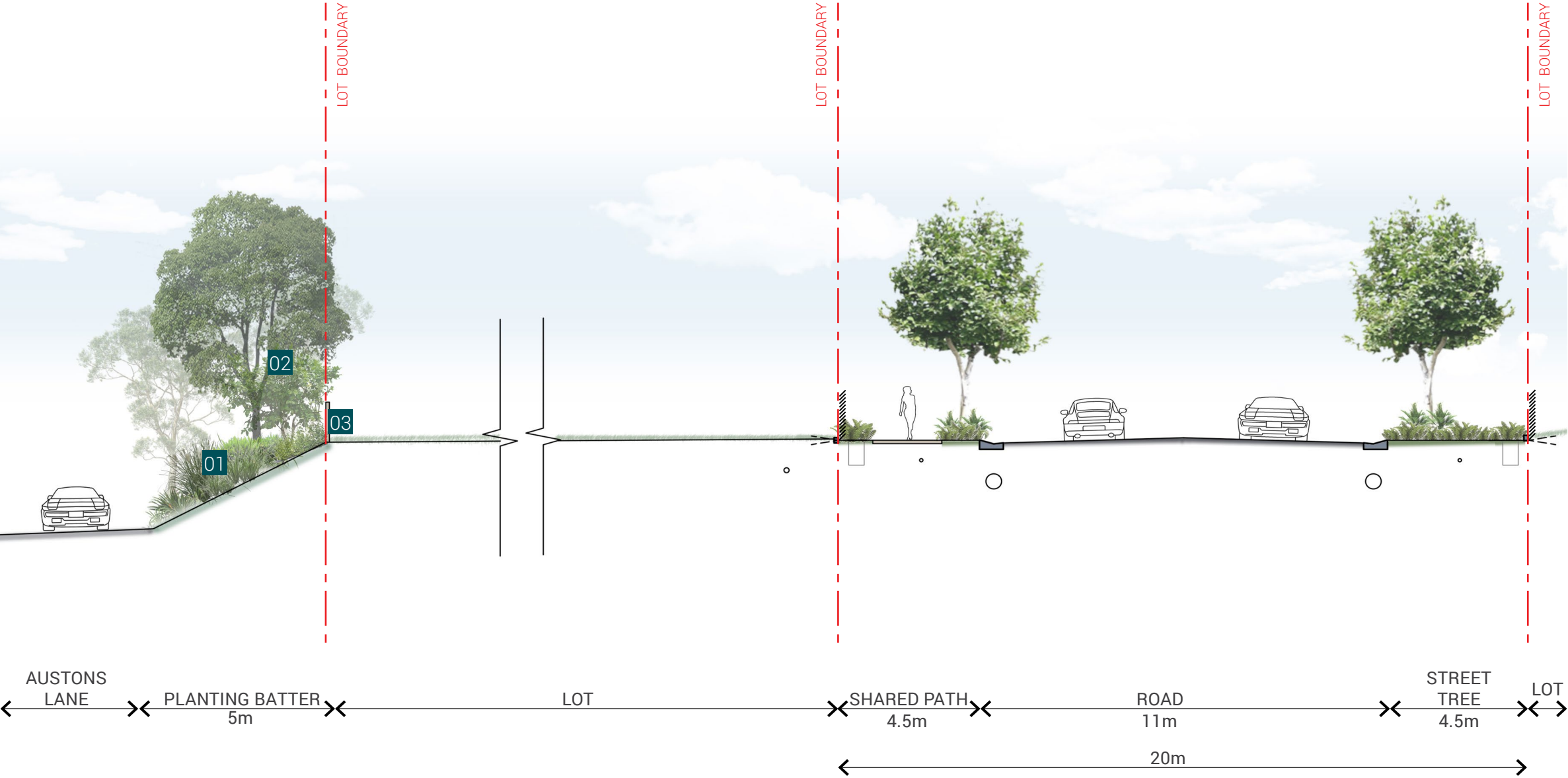


- 01 Eco blanket planting treatment to batter. 1:2 max batters to existing surface
- 02 Street tree in planter
- 03 Estate fence within lots
- 04 1.8m PVC coated chain mess fence to site boundary within planting



Key Plan

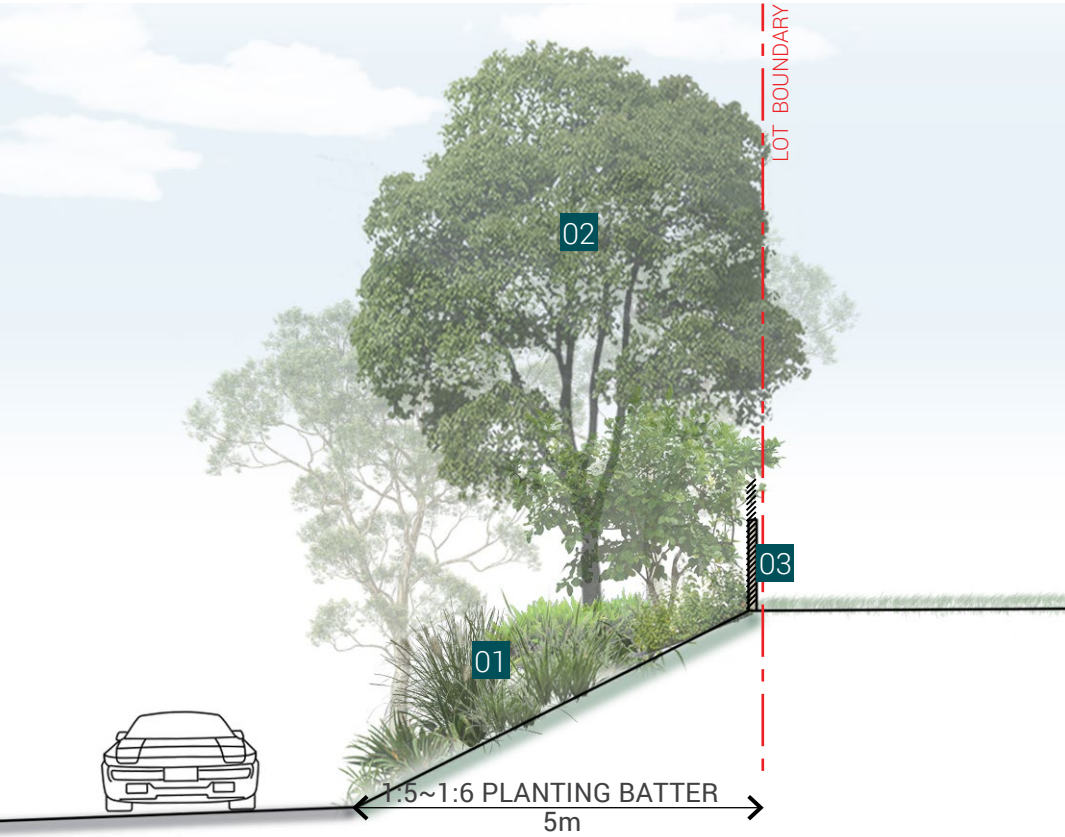




- 01 Batter to existing road with native planting species
- 02 Screening tree
- 03 1.8m PVC coated chain mess fence to lot boundary



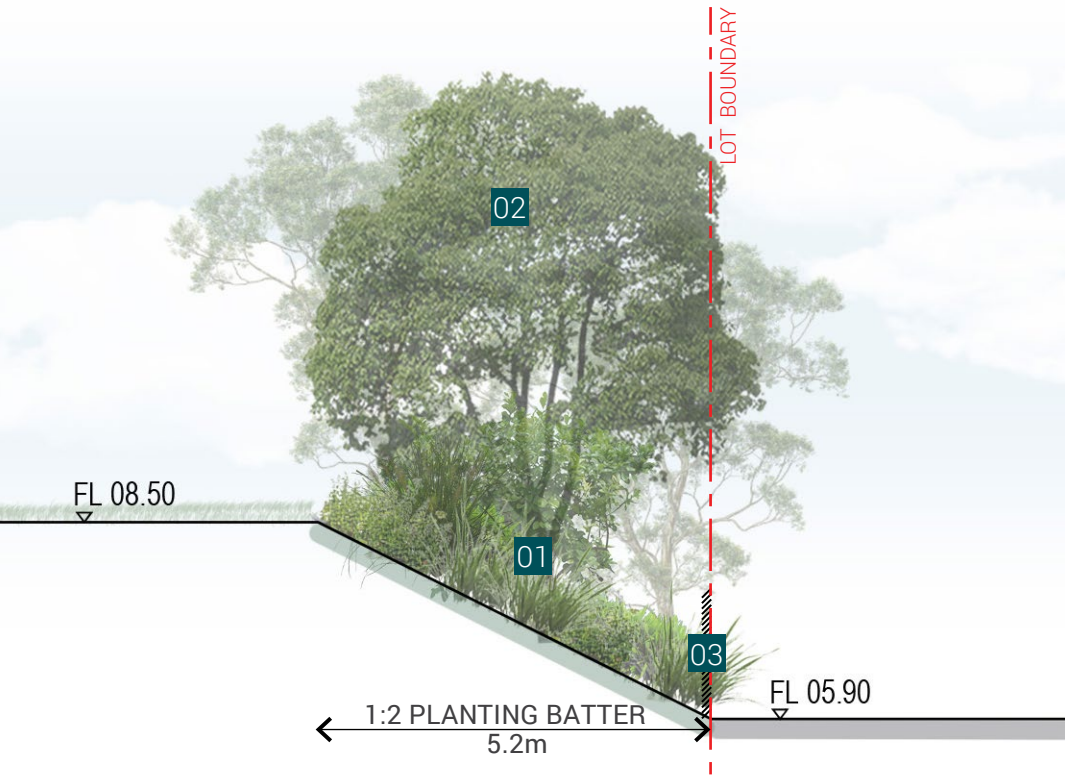
2.5 Planting Batter to Austons Lane & James Creek Road



Section 2 - Planting Batter to Austons Lane



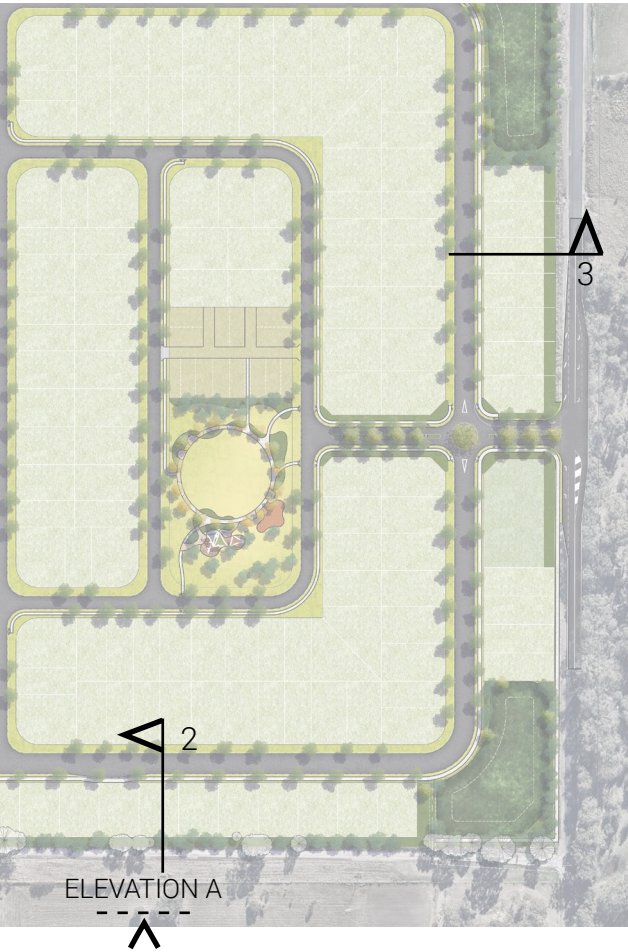
Elevation A - Planting Batter to Austons Lane



Section 3 - Planting Batter to James Creek Road



- 01 Planting batter with low maintenance native planting species
- 02 Screening tree
- 03 1.8m high open metal good neighbour fence
- 04 150x150mm Timber posts to lot boundary intersection
- 05 Existing tree to be retained



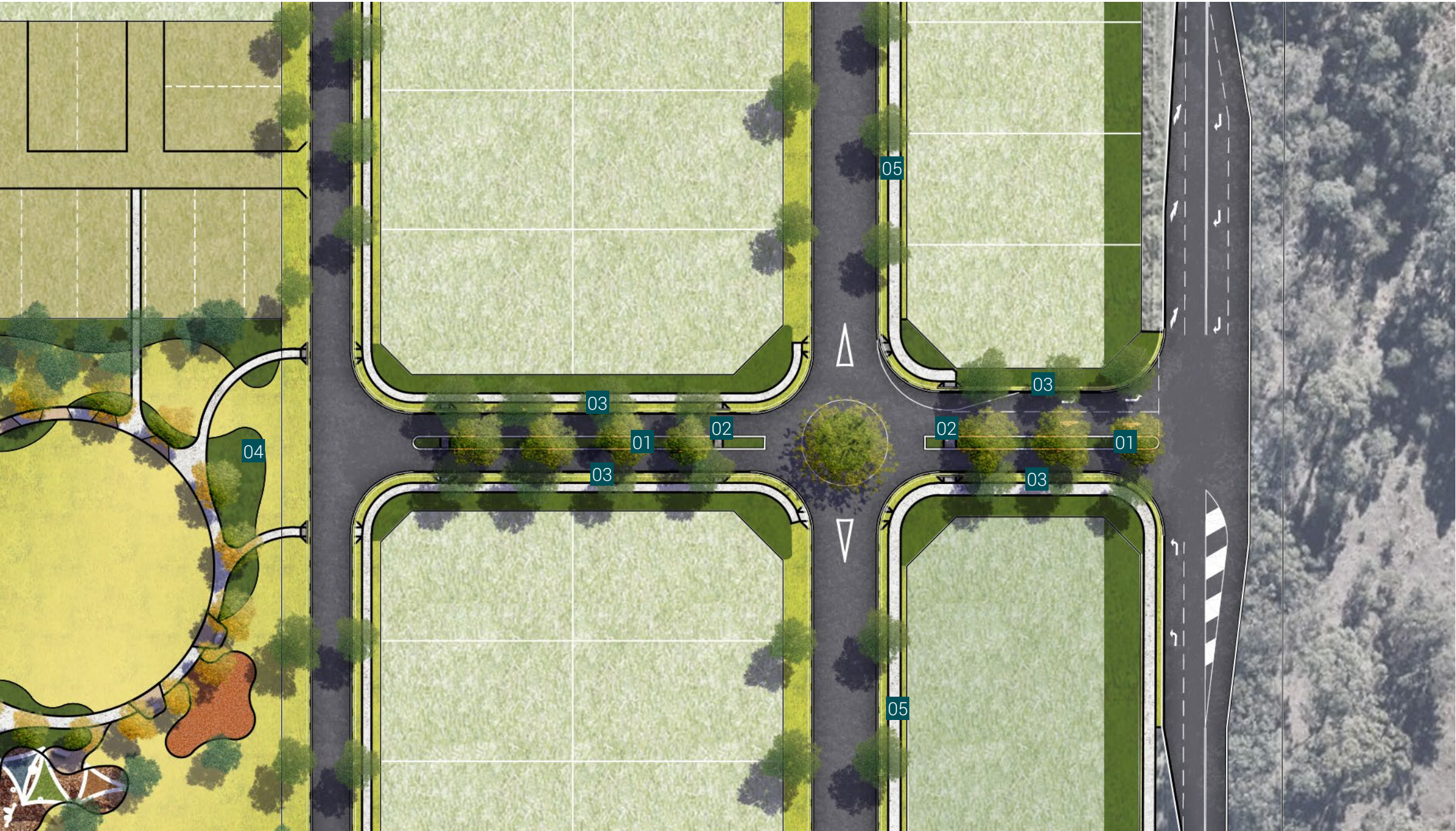


03

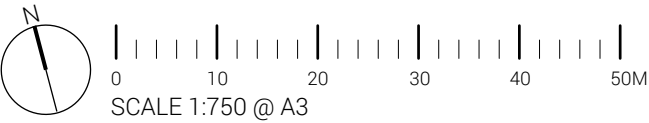
DETAIL DESIGN

DETAIL DESIGN

3.1 Detail Plan 1 - Entrance

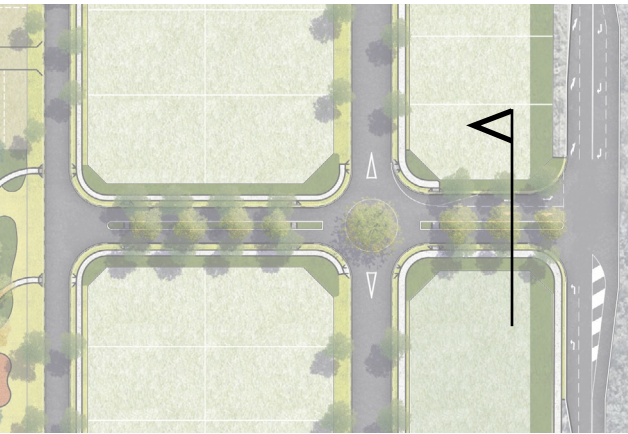


- 01 Planted entry
- 02 Pedestrian crossing
- 03 Boulevard trees
- 04 Planted mounding to frame entry view
- 05 Shared path for pedestrian & bike recreation



DETAIL DESIGN

3.2 Section 4 - Eastern Entrance



Key Plan

- 01 Buffer planting
- 02 Street tree in planter
- 03 Median with feature boulevard tree
- 04 Estate fence within lots



DETAIL DESIGN

3.3 Detail Plan 2 - Central Parkland



01 Village green



02 Seating under feature trees



03 Playground
Under shade



04 Swings



05 Spinner Bowl / Carousel

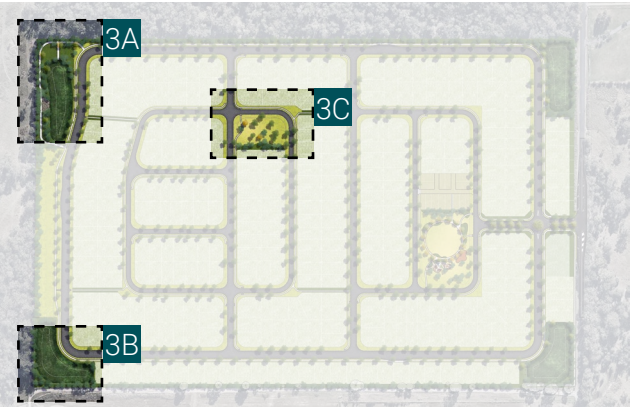
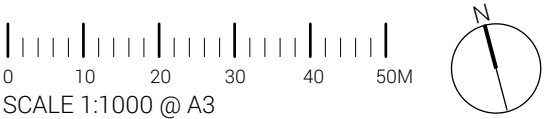
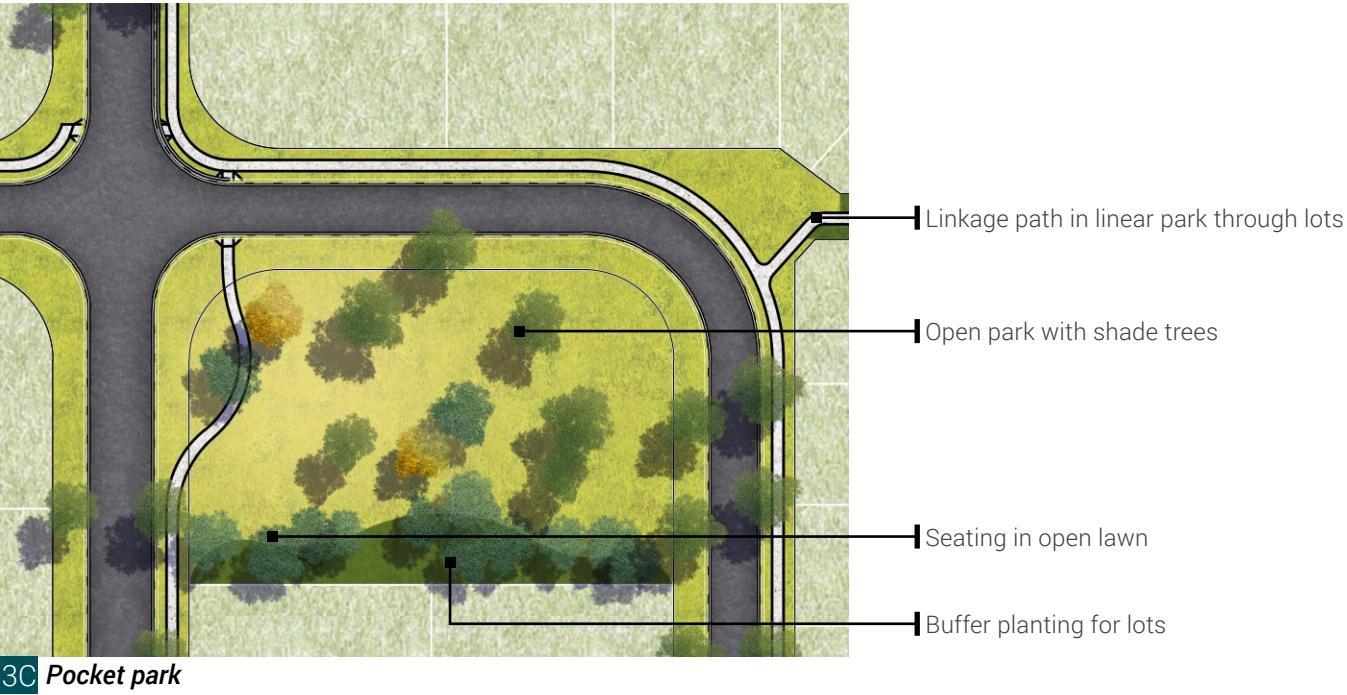
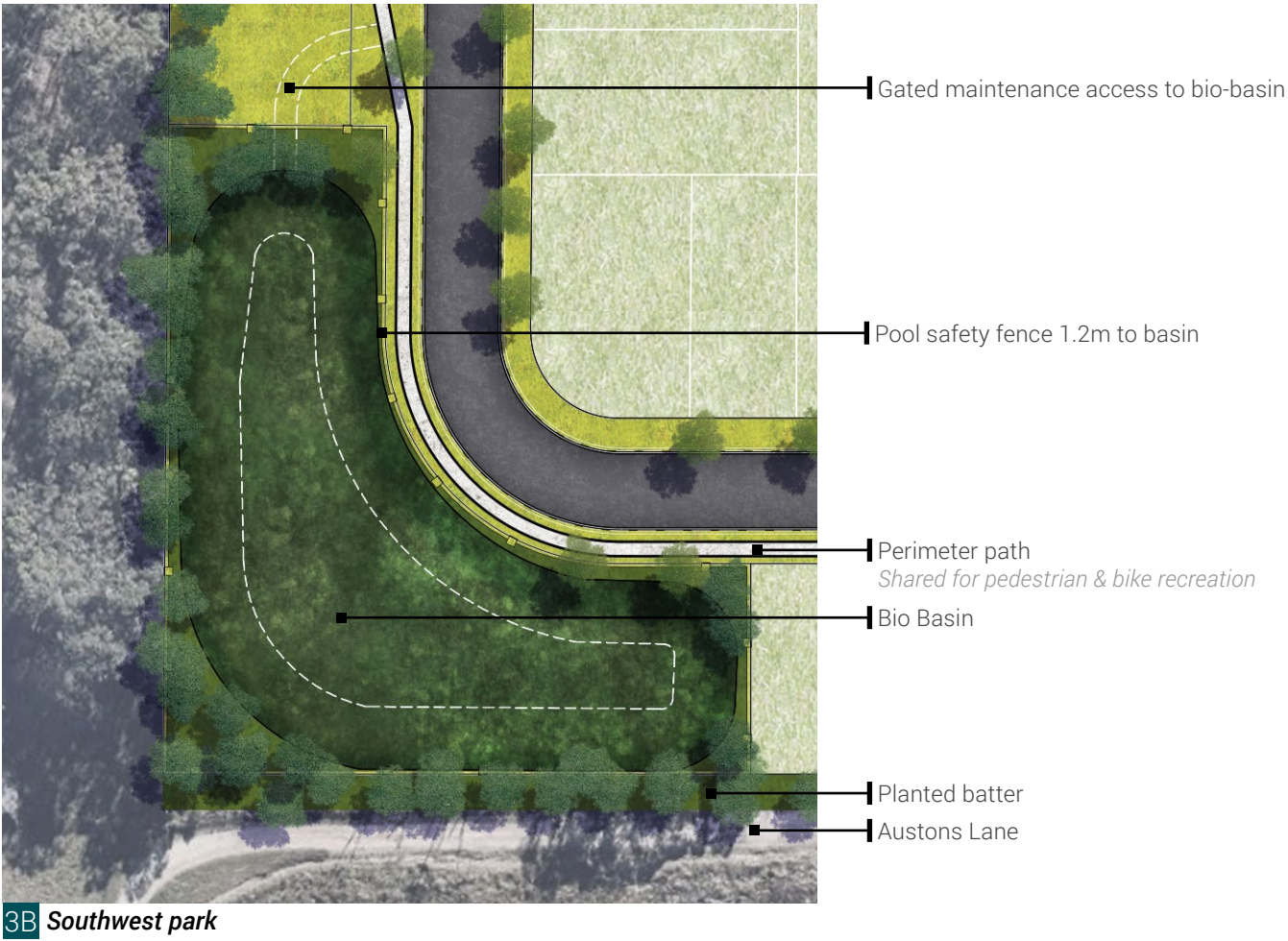
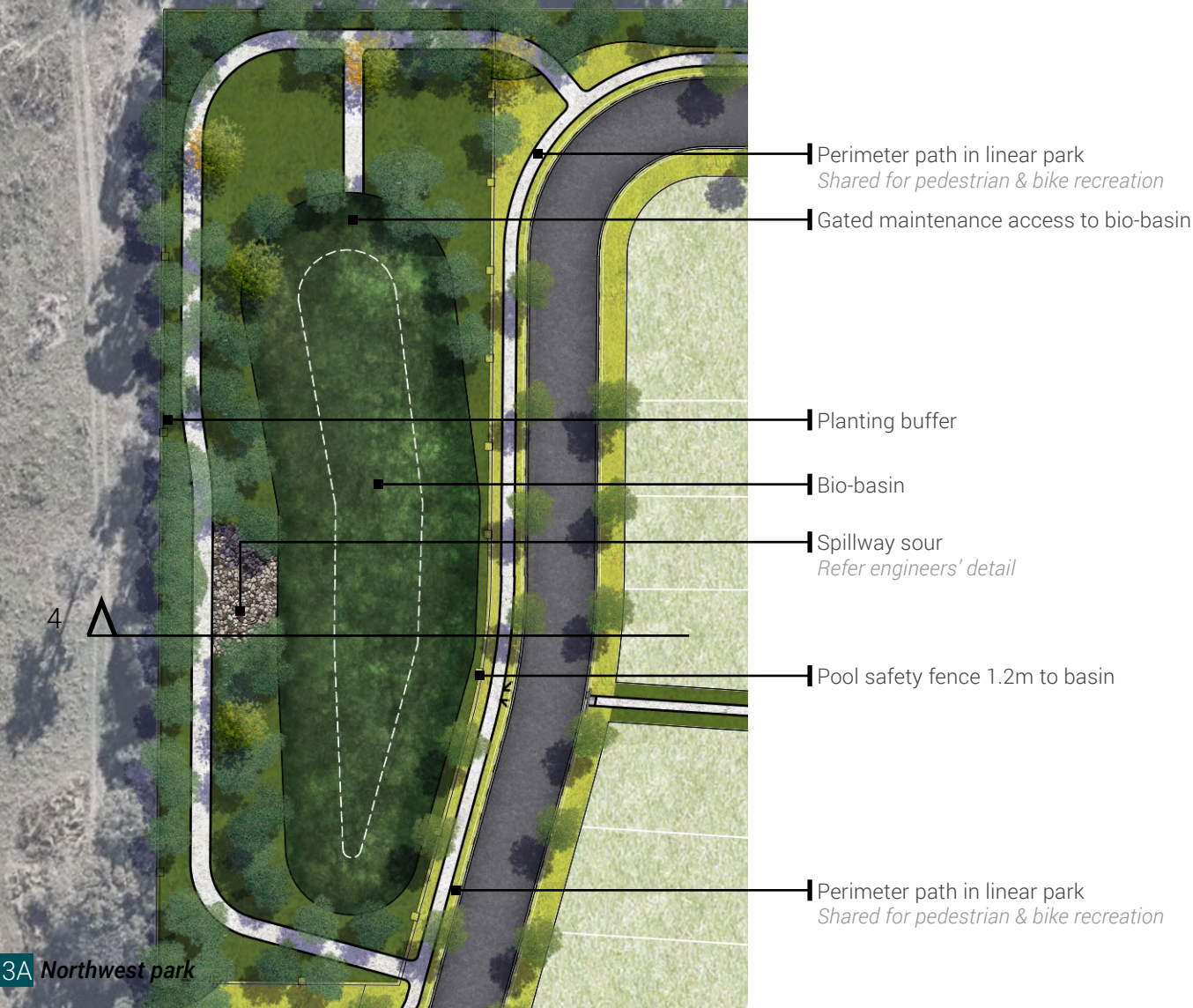


06 Exercise Station

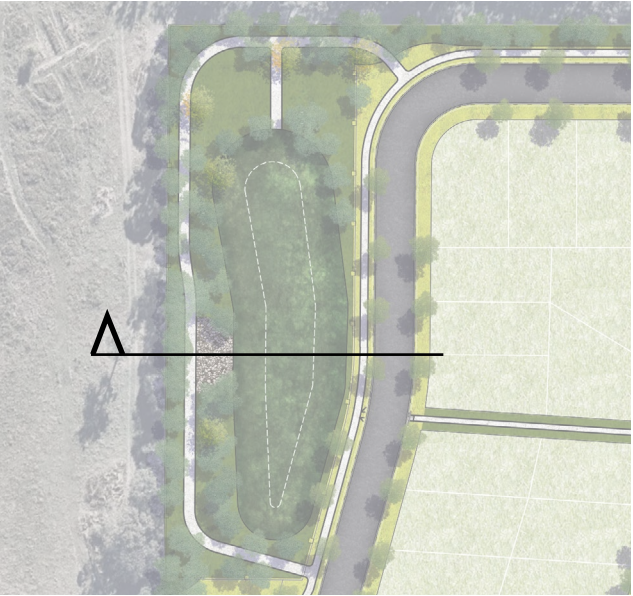


DETAIL DESIGN

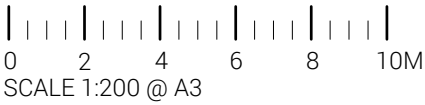
3.4 Detail Plan 3 - Western Parks & Basin

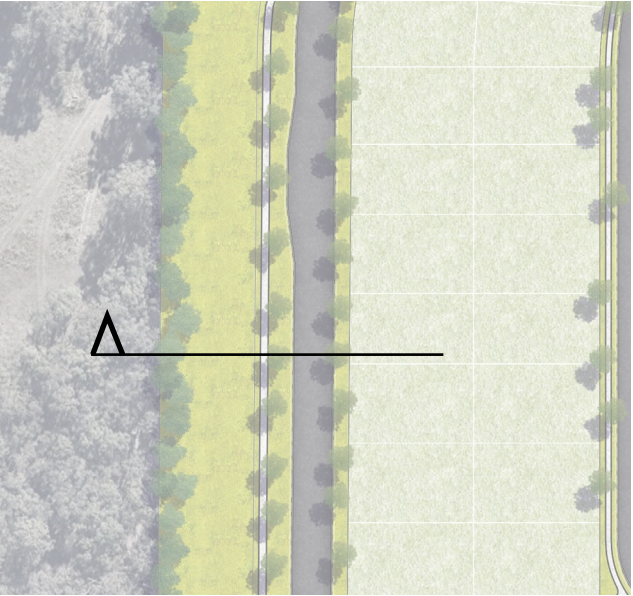
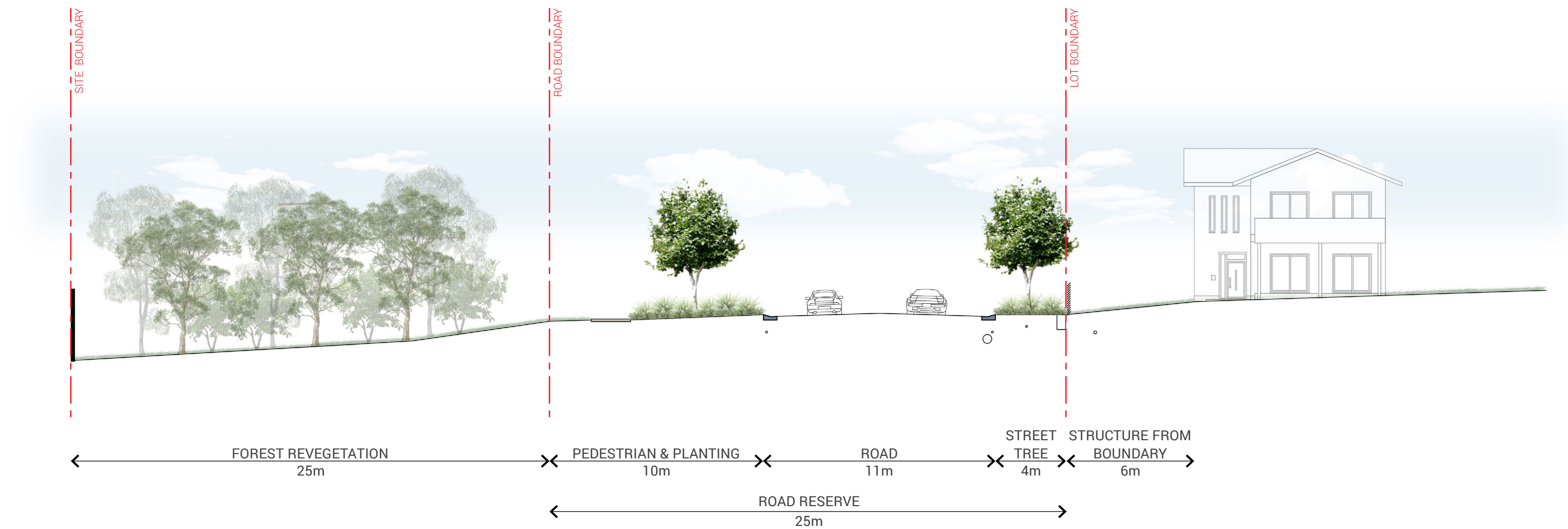


Key Plan

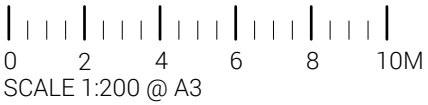


Key Plan



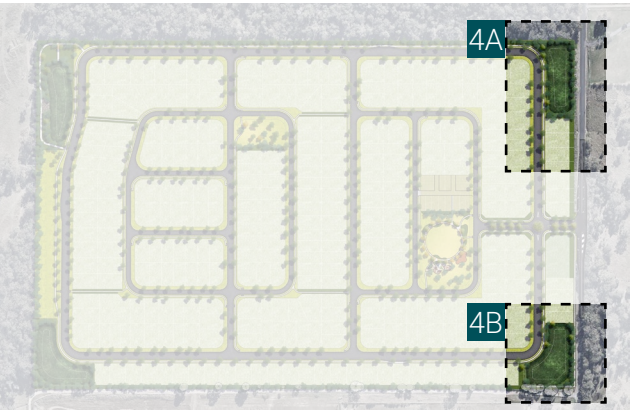


Key Plan

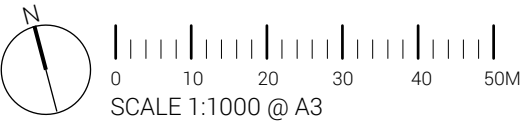


DETAIL DESIGN

3.7 Detail Plan 4 - Eastern Parks & Basin



Key Plan





01 Seating



02 Bio Basin



03 Community lawn



04

PLANTING

PLANTING

4.1 Planting Palette - Street

Botanical Name	Common Name	TREES
<i>Tristaniopsis laurina</i>	Kanooka Gum	
<i>Waterhousea floribunda</i>	Weeping Lilly Pilly	
<i>Cupaniopsis anacardioides</i>	Tuckeroo	



Tristaniopsis laurina
Kanooka Gum



Waterhousea floribunda
Weeping Lilly Pilly



Cupaniopsis anacardioides
Tuckeroo

Botanical Name	Common Name	SHRUB & GROUND COVER
<i>Acmena smithii</i> 'Allyn Magic'	Allyn Magic	
<i>Syzygium australe</i>	Brush cherry	
<i>Callistemon viminalis</i> 'little john'	Little John	
<i>Westringia fruticosa</i> 'Mundi'	Mundi	
<i>Westringia hybrid</i> 'Blue Gem'	Blue Gem	
<i>Dianella caerulea</i>	Blue Flax Lily	
<i>Lomandra longifolia</i> 'Nyalla'	Nyalla	
<i>Lomandra hystrix</i> 'Katie Belles'	Katie Belles	
<i>Crinum pedunculatum</i>	Swamp lily	
<i>Myoporum ellipticum</i>	Coastal Boobialla	



Acmena smithii 'Allyn Magic'
Allyn Magic



Syzygium australe
Brush cherry



Callistemon viminalis 'little john'
Little John



Westringia fruticosa 'Mundi'
Mundi



Westringia hybrid 'Blue Gem'
Blue Gem



Dianella caerulea
Blue Flax Lily



Lomandra longifolia 'Nyalla'
Nyalla



Lomandra hystrix 'Katie Belles'
Katie Belles



Crinum pedunculatum
Swamp lily



Myoporum ellipticum
Coastal Boobialla

PLANTING

4.2 Planting Palette - Park Trees

Botanical Name	Common Name
<i>Corymbia citriodora</i>	Spotted Gum
<i>Ficus brachypoda</i>	Edible fig
<i>Ficus microcarpa</i>	Indian Laurel Fig
<i>Tristaniopsis laurina</i>	Kanooka Gum
<i>Syzygium oleosum</i>	Blue Lilly Pilly
<i>Leptospermum petersonii</i>	Lemon-scented Tea Tree
<i>Lophostemon confertus</i>	Tristania Conferta

TREES



Corymbia citriodora
Spotted Gum



Ficus brachypoda
Edible fig



Ficus microcarpa
Indian Laurel Fig



Tristaniopsis laurina
Kanooka Gum



Syzygium oleosum
Blue Lilly Pilly



Leptospermum petersonii
Lemon-scented Tea Tree



Lophostemon confertus
Tristania Conferta

PLANTING

4.3 Planting Palette - Park Shurb & Groundcover

Botanical Name	Common Name
<i>Syzygium australe</i>	Brush cherry
<i>Banksia robur</i>	Swamp Banksia
<i>Callistemon viminalis 'little john'</i>	Little John
<i>Lomandra hystrix 'Katie Belles'</i>	Katie Belles
<i>Westringia hybrid 'Blue Gem'</i>	Blue Gem
<i>Hovea longifolia</i>	Hovea purple bush pea
<i>Leptospermum polygalifolium</i>	Tea Tree
<i>Leptospermum 'Pink Cascade'</i>	Pink Cascade
<i>Austromyrtus dulcis</i>	Midgen berry

SHRUB & GROUNDCOVER



Syzygium australe
Brush cherry



Banksia robur
Swamp Banksia



Callistemon viminalis 'little john'
Little John



Lomandra hystrix 'Katie Belles'
Katie Belles



Westringia hybrid 'Blue Gem'
Blue Gem



Hovea longifolia
Hovea purple bush pea



Leptospermum polygalifolium
Tea Tree



Leptospermum 'Pink Cascade'
Pink Cascade



Austromyrtus dulcis
Midgen berry

PLANTING

4.4 Planting Palette - Southern Batter to Austons Lane

Botanical Name	Common Name	TREES
<i>Eucalyptus sp</i>	Poplar Box	



Eucalyptus sp
Poplar Box

Botanical Name	Common Name	SHRUB & GROUND COVER
<i>Grevillea rosemarinifolia</i> 'Crimson Villea'	Crimson Villea	
<i>Poa labillardieri</i>	Common Tussock-grass	
<i>Pennisetum alopecuroides</i> Common	Swamp Foxtail Grass	
<i>Lomandra fluviatilis</i> 'Shara'	Shara	
<i>Lomandra labill</i> 'Evergreen Baby'	Evergreen Baby	
<i>Lomandra multiflora</i> 'Frilly Lace'	Frilly Lace	



Grevillea rosemarinifolia 'Crimson Villea'
Crimson Villea



Poa labillardieri
Common Tussock-grass



*Pennisetum alopecuroides*Common
Swamp Foxtail Grass



Lomandra fluviatilis 'Shara'
Shara



Lomandra labill 'Evergreen Baby'
Evergreen Baby



Lomandra multiflora 'Frilly Lace'
Frilly Lace

PLANTING

4.5 Planting Palette - Bio Basin

Botanical Name	Common Name	TREES
<i>Melaleuca linariifolia</i>	Paperbark	



Melaleuca linariifolia
Paperbark

Botanical Name	Common Name	SHRUB & GROUND COVER
<i>Baloskion tetraphyllum</i>	tassel rope-rush	
<i>Dianella longifolia</i> var <i>longifolia</i>	Pale Flax-lily	
<i>Lomandra hystrix</i> 'Katie Belles'	Katie Belles	
<i>Lomandra longifolia</i> 'Katrinus Deluxe'	Katrinus Deluxe	
<i>Pennisetum alopecuroides</i> 'Purple Lea'	Purple Lea	
<i>Lomandra fluviatilis</i> 'Shara'	Shara	
<i>Banksia robur</i>	Swamp Banksia	
<i>Carex appressa</i>	Tall Sedge	
<i>Carex fascicularis</i>	Tassel Sedge	
<i>Ficinia nodosa</i>	Knobby Club Rush	



Baloskion tetraphyllum
tassel rope-rush



Dianella longifolia var *longifolia*
Pale Flax-lily



Lomandra hystrix 'Katie Belles'
Katie Belles



Lomandra longifolia 'Katrinus Deluxe'
Katrinus Deluxe



Pennisetum alopecuroides 'Purple Lea'
Purple Lea



Lomandra fluviatilis 'Shara'
Shara



Banksia robur
Swamp Banksia



Carex appressa
Tall Sedge



Carex fascicularis
Tassel Sedge



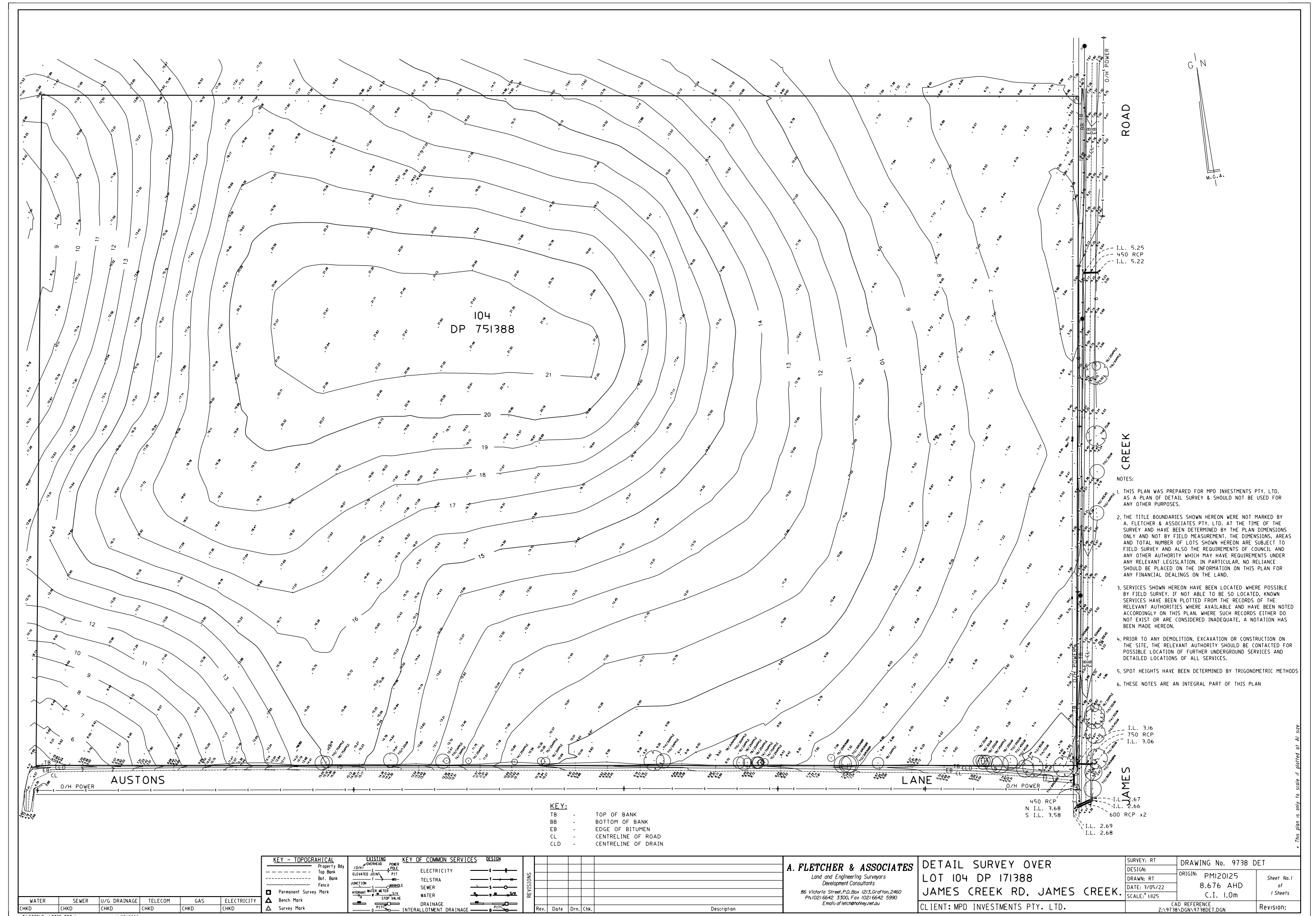
Ficinia nodosa
Knobby Club Rush



05

APPENDIX

5.1 Site Survey





place
design
group.